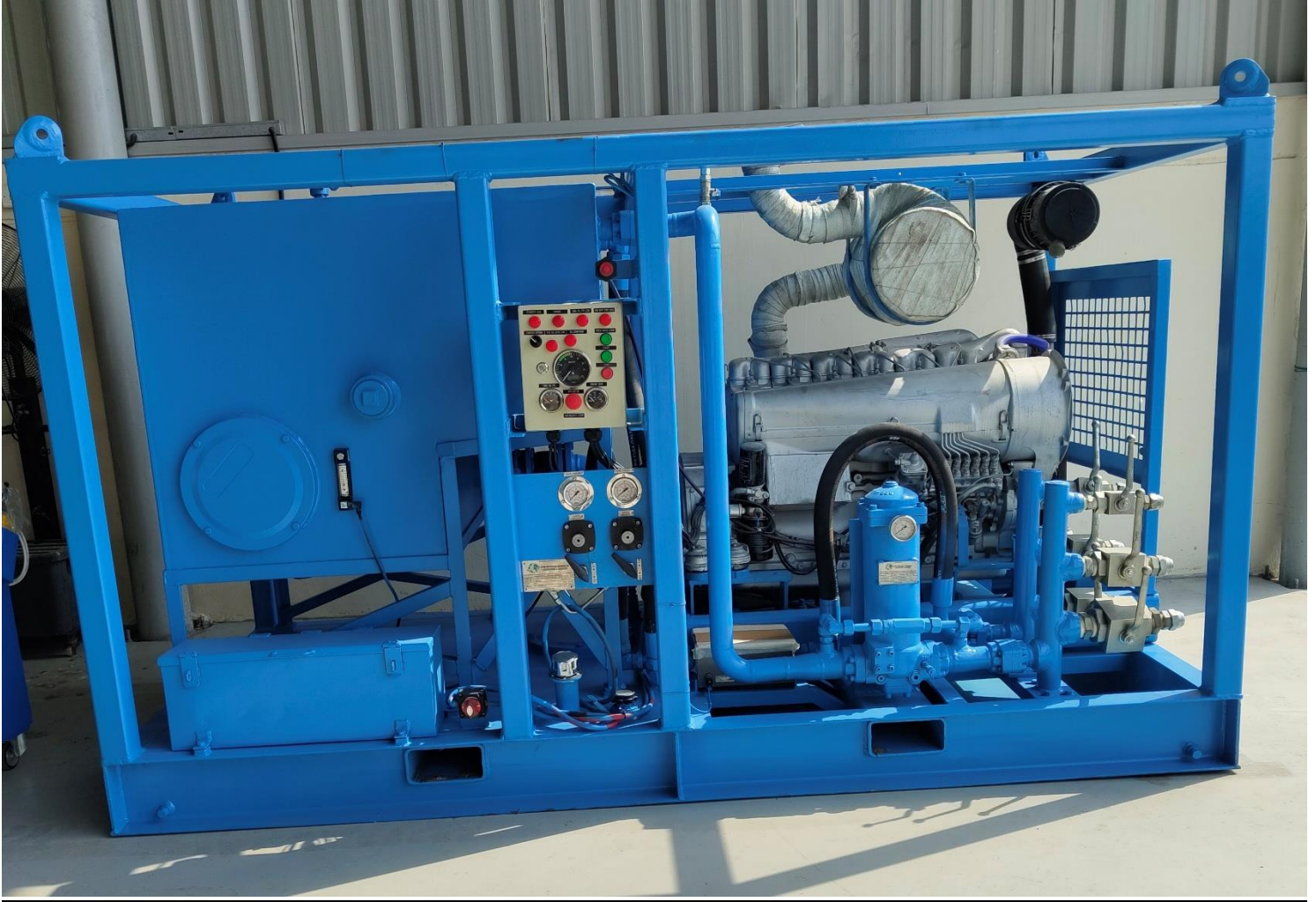


TECHNICAL DATA SHEET OF FLUSHING RIG MACHINE



TECHNICAL DATA SHEET OF FLUSHING RIG MACHINE

Category	Specification
Model	SUH-FR.102-VP250/140-240B-FM-5M-SM-DA
Overall Dimensions	2600 x 1400 x 1735 mm
Paint Finish	Sand-blasted to SA 2.5; 3 coats of industrial-grade painting system
Engine Type	Diesel
Power Output	109 kW @ 2500 rpm
Diesel Tank Capacity	250 liters
Hydraulic Pump	Double Vane Pump
Flow P1	258 lpm @ 150 Bar
Flow P2	142 lpm @ 200 Bar
Flow P1 + P2	400 lpm @ 100 Bar
Hydraulic Tank Capacity	800 liters
Filtration	Absolute rated
Return Line Filtration	3 microns absolute – Beta 3:200
Pumping Unit	1 set
Pump Flow Range	10 to 400 lpm
RPM Range	1000 to 2000 rpm
Max Test Pressure	200 bar maximum
Electrical Control Panel	Fully equipped with safety interlocks such as high engine temperature, low lubricating oil pressure, low diesel level and high temperature hydraulic oil cutoff